

ВАЛЬС „ДУНАЙСКИЕ ВОЛНЫ“

3

И. ИВАНОВИЧИ

Темп вальса

Семиструнная
гитара

1. p

2. f

mf

IV

1. f

2. f

3. $rit..$

Нерать от знака % до знака ⊕, после чего перейти на 3^ю вольту.

a tempo

2. *mp*

1. *rit.*

2.

3 2 3 1

1 1 2 3 2 1

3 2 3 1

1. 2.

f *f*

3. 4/2

Играть 2^{ой} вальс с начала
до знака Φ , затем перейти на 3^ю вольту

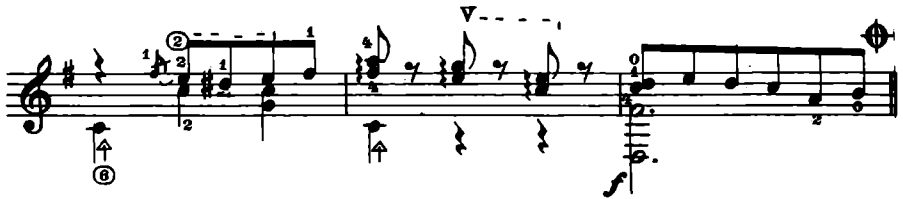
3. *p*

ff

Φ

1. 2.

p



*Играя от знака § до знака Ⓢ
затем перейти на 3^ю вольту*



Играть от знака X до знака Ф, затем перейти на Окончание

*) В этом такте первый палец лев. руки на 2^ю четверть нужно перенести с ноты фа на ноту до, на 3^ю струне. 26004

Окончание

First musical staff of the score. It begins with a treble clef, a key signature of one sharp (F#), and a common time signature (C). The music starts with a piano (*p*) dynamic. The notation includes quarter notes, eighth notes, and chords, with some notes marked with a fermata.

Second musical staff of the score, continuing the melody and accompaniment from the first staff.

Third musical staff of the score, featuring more complex chordal textures and melodic lines.

Fourth musical staff of the score, characterized by a series of chords with a rising bass line and a melodic line of eighth notes. A mezzo-forte (*mf*) dynamic marking is present.

Fifth musical staff of the score, showing a continuation of the rhythmic and harmonic patterns.

Sixth and final musical staff of the score, concluding the piece with a series of chords and melodic fragments.

