

Liuto Solo  
del Sgnr. Baron

**Ernst Gottlieb Baron**

**Suite en sol mineur**

*Brussel - Koninklijke Bibliotheek - Fasc. 9*

# Les pièces de la suite

- 1 - Allemande
- 2 - Courante
- 3 - Aria
- 4 - Menuet
- 5 - Gavotte
- 6 -
- 7 - Sarabande
- 8 - Gigue
- 9 - Accord = sol mineur

# Allemande

8

5

9

15

20

25

29

# Courante

8

4

7

10

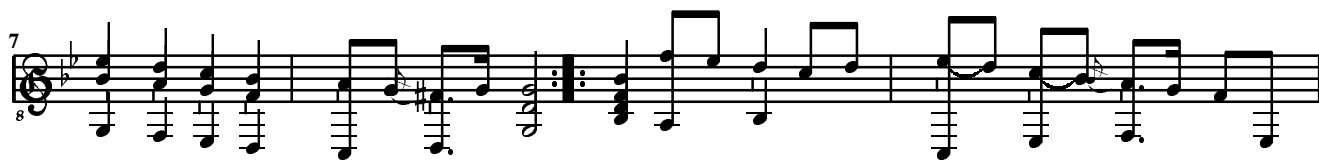
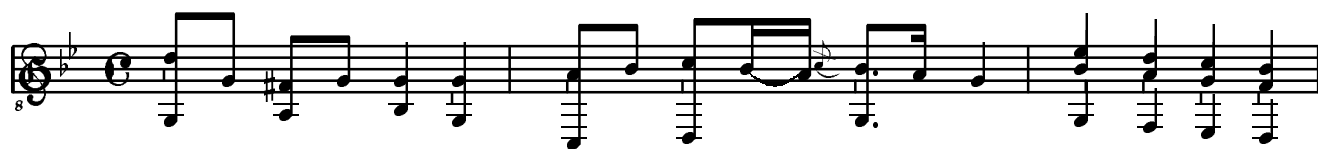
15

18

22

26

# Aria



# Menuet

Measures 1-5 of the Minuet. The music is in G minor (one flat) and 3/4 time. The melody is written in the treble clef, and the bass line is in the bass clef. The piece begins with a treble clef, a key signature of one flat, and a 3/4 time signature. The first measure contains a treble clef, a key signature of one flat, and a 3/4 time signature. The melody starts with a quarter note G4, followed by quarter notes A4, B4, and C5. The bass line consists of a steady eighth-note accompaniment: G3, A3, B3, C4, D4, E4, F4, G4.

Measures 6-11 of the Minuet. The melody continues with quarter notes D5, E5, and F5. A repeat sign appears at the beginning of measure 10. The bass line continues with eighth notes: G4, A4, B4, C5, D5, E5, F5, G5.

Measures 12-17 of the Minuet. The melody features eighth-note patterns: G4, A4, B4, C5, D5, E5, F5, G5. The bass line continues with eighth notes: G4, A4, B4, C5, D5, E5, F5, G5.

Measures 18-21 of the Minuet. The melody continues with quarter notes G5, F5, E5, and D5. The bass line continues with eighth notes: G4, A4, B4, C5, D5, E5, F5, G5.

Measures 22-24 of the Minuet. The melody concludes with quarter notes C5, B4, and A4. The piece ends with a double bar line and a repeat sign. The bass line continues with eighth notes: G4, A4, B4, C5, D5, E5, F5, G5.

# Gavotte

1

5

9

13

16

19

22

# Sarabande

0

4

8

12

16

21

25

29



# Gigue

Measures 1-3 of the Gigue. The music is in G minor (one flat) and 6/8 time. The first measure starts with a treble clef and a key signature of one flat. The melody begins with a quarter note G4, followed by eighth notes A4-B4-C5, and a quarter note D5. The bass line consists of a steady eighth-note pattern: G3-A3-B3-C4-D4-E4-F4-G4.

Measures 4-6 of the Gigue. The melody continues with eighth notes D5-C5-B4-A4, followed by a quarter note G4. In measure 5, the melody has a quarter rest, and the bass line has a quarter note G4. In measure 6, the melody has a quarter rest, and the bass line has a quarter note G4.

Measures 7-9 of the Gigue. The melody continues with eighth notes G4-A4-B4-C5, followed by a quarter note D5. In measure 8, the melody has a quarter rest, and the bass line has a quarter note G4. In measure 9, the melody has a quarter rest, and the bass line has a quarter note G4.

Measures 10-12 of the Gigue. The melody continues with eighth notes D5-C5-B4-A4, followed by a quarter note G4. In measure 11, the melody has a quarter rest, and the bass line has a quarter note G4. In measure 12, the melody has a quarter rest, and the bass line has a quarter note G4.

Measures 13-16 of the Gigue. The melody continues with eighth notes G4-A4-B4-C5, followed by a quarter note D5. In measure 14, the melody has a quarter rest, and the bass line has a quarter note G4. In measure 15, the melody has a quarter rest, and the bass line has a quarter note G4. In measure 16, the melody has a quarter rest, and the bass line has a quarter note G4.

Measures 17-19 of the Gigue. The melody continues with eighth notes G4-A4-B4-C5, followed by a quarter note D5. In measure 18, the melody has a quarter rest, and the bass line has a quarter note G4. In measure 19, the melody has a quarter rest, and the bass line has a quarter note G4.

20

23

26

**IL FINE**

# Accord = sol mineur

J

