

Salvador

Egberto Gismonti (1947)
Transcrição - Yuri Marchese

(6^a = D)

V

5

9

13

17

21

acc.

① ② ③ ④ ⑤ ⑥ ⑦ ⑧ ⑨ ⑩ ⑪ ⑫ ⑬ ⑭ ⑮ ⑯ ⑰ ⑱ ⑲ ⑳ ㉑ ㉒ ㉓ ㉔ ㉕ ㉖ ㉗ ㉘ ㉙ ㉚ ㉛ ㉜ ㉝ ㉞ ㉟ ㊱ ㊲ ㊳ ㊴ ㊵ ㊶ ㊷ ㊸ ㊹ ㊺

3 4 1 3 2 4 4 3 2 4 1 2 4 1 4 4 3 2 4 1 2 3 4 5 6 7 8 9 10 11 12 13 14 15 16 17 18 19 20 21 22 23 24 25 26 27 28 29 30 31 32 33 34 35 36 37 38 39 40 41 42 43 44 45 46 47 48 49 50 51 52 53 54 55 56 57 58 59 60 61 62 63 64 65 66 67 68 69 70 71 72 73 74 75 76 77 78 79 80 81 82 83 84 85 86 87 88 89 90 91 92 93 94 95 96 97 98 99 100

25

V-----

29

33

37

1. 2.

43

V-----

47

VIII

VIII -----

51

V -----

55

59

63

67

I -----

71

sempre na posição I

76



80



84

To coda ☉

*Meno*

III

V

VI

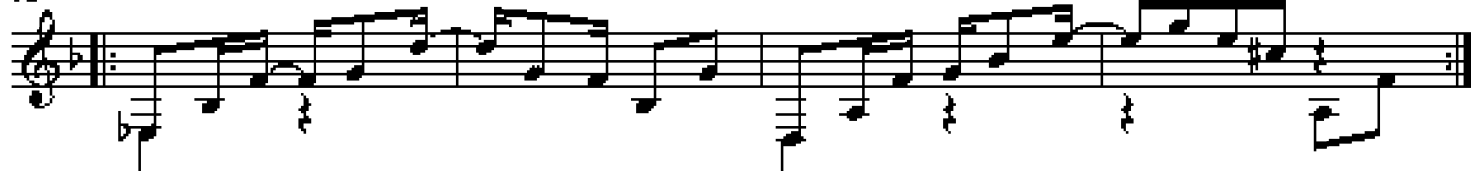
X

XIII

88



92



CI

96



102

109

polegar em movimento alternado

114

118

gliss

122

I III

128

D.S. al Coda

accel.

Coda

The musical score for the Coda section consists of four staves of piano accompaniment. The first staff begins with a treble clef and a key signature of one flat (B-flat). It features a melodic line with triplets of eighth notes and a bass line with eighth-note chords. The second and third staves continue the bass line with dense, rhythmic patterns of eighth-note chords, some of which are beamed together. The fourth staff concludes the section with a melodic line that includes a trill-like figure and a final chord, accompanied by a bass line with descending eighth-note chords. The notation includes various articulation marks such as slurs, accents, and dynamic markings.