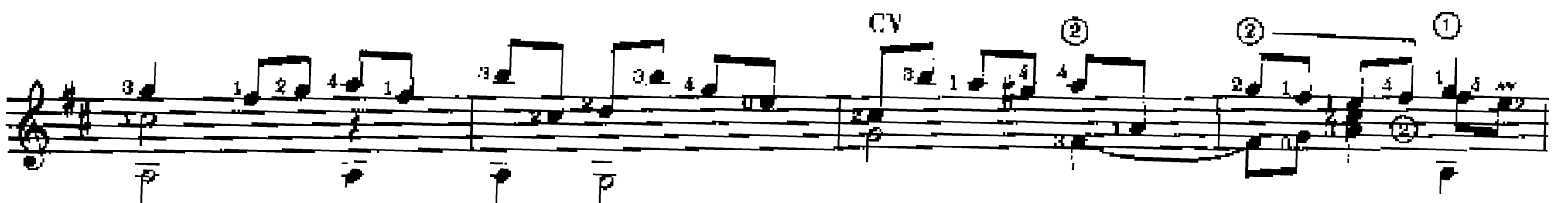
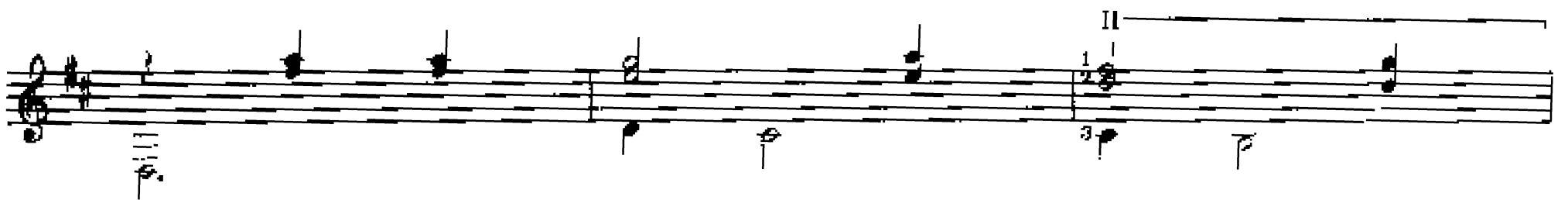
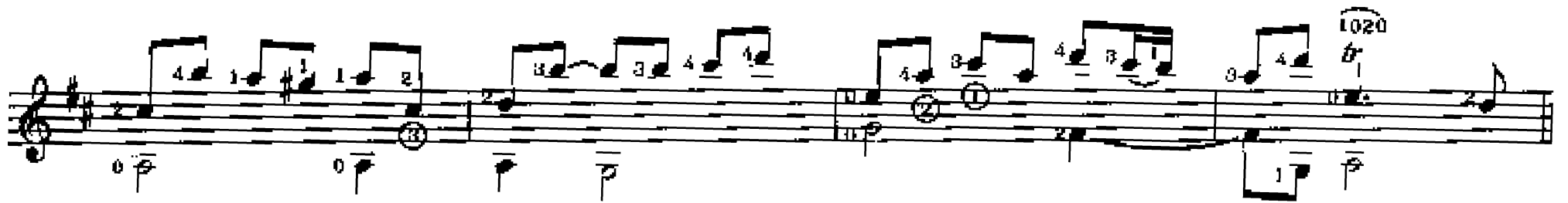
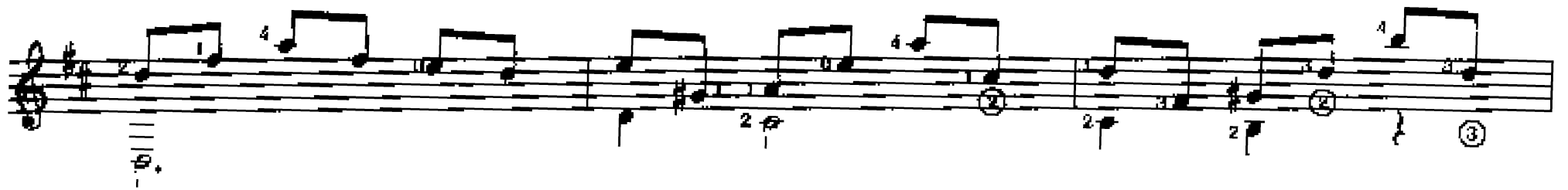
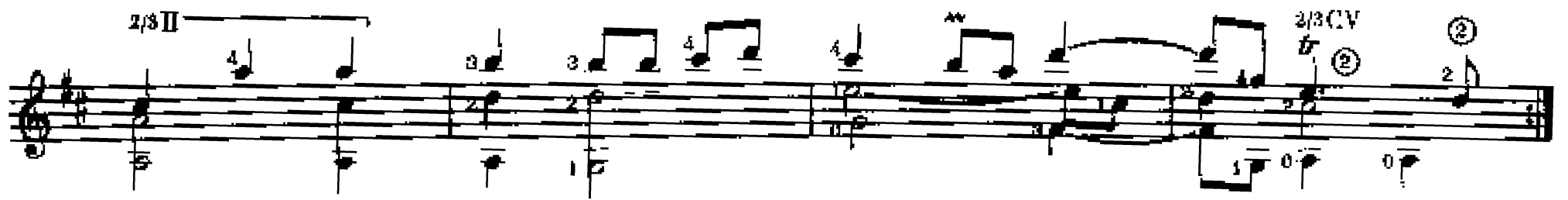


# PASSACAILLE

SYLVIUS LEOPOLD WEISS



First musical staff with treble clef and key signature of one sharp (F#). It features a series of eighth-note chords and single notes. A bracket labeled "III" spans the final two measures. Fingering numbers (0, 2, 1, 2, 1, 0, 4, 1, 1, 1) are placed above the notes. Dynamic markings include  $\bar{p}$ ,  $p$ , and  $1p$ .

Second musical staff with treble clef and key signature of one sharp. It contains eighth-note chords and single notes. A bracket labeled "1/2 II" is positioned above the final two measures. Fingering numbers (2, 1, 2, 2, 1, 2, 1, 1, 2, 4) are placed above the notes. Dynamic markings include  $\bar{p}$ ,  $p$ , and  $3p$ .

Third musical staff with treble clef and key signature of one sharp. It features eighth-note chords and single notes. A bracket labeled "1/2 II" is positioned above the first two measures. Fingering numbers (2, 1, 2, 2, 2, 2, 2, 2, 4, 0, 0) are placed above the notes. Dynamic markings include  $\bar{p}$ ,  $p$ , and  $3p$ .

Fourth musical staff with treble clef and key signature of one sharp. It contains eighth-note chords and single notes. A bracket labeled "II" spans the first two measures. Fingering numbers (2, 4, 2, 2, 2, 2, 2, 2, 4, 0, 4, 3, 1, 4) are placed above the notes. Dynamic markings include  $3p$ ,  $1p$ ,  $0p$ , and  $4p$ . Circled numbers 2 and 3 are placed below the notes.

Fifth musical staff with treble clef and key signature of one sharp. It features eighth-note chords and single notes. A bracket labeled "2131" is positioned above the first measure. Fingering numbers (2, 2, 2, 2, 2, 1, 1, 1, 1, 1, 4, 3, 1, 1) are placed above the notes. Dynamic markings include  $3p$ ,  $3p$ ,  $3p$ ,  $1p$ , and  $4p$ . Circled numbers 1, 2, 3, and 4 are placed below the notes.

Sixth musical staff with treble clef and key signature of one sharp. It contains eighth-note chords and single notes. A bracket labeled "II" spans the first four measures, and another bracket labeled "1/2 II" spans the last two measures. Fingering numbers (1, 1, 1, 1, 1, 1, 1, 1, 4, 4) are placed above the notes. Dynamic markings include  $2p$ ,  $3p$ ,  $1p$ ,  $3p$ , and  $4p$ .

Seventh musical staff with treble clef and key signature of one sharp. It features eighth-note chords and single notes. Brackets labeled "CV", "II", and "III" are positioned above the first, second, and third measures respectively. Fingering numbers (4, 2, 3, 2, 3, 1, 4, 1, 1, 1, 1, 4, 1) are placed above the notes. Dynamic markings include  $3p$ ,  $1p$ ,  $3p$ ,  $3p$ ,  $0p$ , and  $0p$ .

First musical staff with treble clef and key signature of one sharp (F#). It features a melodic line with eighth notes and a bass line with chords. A slur labeled "II" spans the final two measures. Fingering numbers 1, 2, 3, and 4 are present.

Second musical staff with treble clef and key signature of one sharp. It features a melodic line with eighth notes and a bass line with chords. A slur labeled "1/2 II" spans the final two measures. Circled numbers 2 and 3 are used as markers. Fingering numbers 1, 2, 3, 4, and 0 are present.

Third musical staff with treble clef and key signature of one sharp. It features a melodic line with eighth notes and a bass line with chords. A slur labeled "1/2 II" spans the first two measures. Circled numbers 3 and 6 are used as markers. Fingering numbers 1, 3, 4, 0, 1, 4, 1, 0, 1, 4, 1 are present. The text "Nat. Harm. XII" is written below the staff.

Fourth musical staff with treble clef and key signature of one sharp. It features a melodic line with eighth notes and a bass line with chords. A slur labeled "VII" spans the first three measures. Circled numbers 4 and 3 are used as markers. Fingering numbers 2, 2, 2, 4, 2, 4, 4, 2, 1, 4, 1, 3, 4, 1, 3, 4, 1, 3, 4, 1 are present. The text "Nat. Harm. XII" is written below the staff.

Fifth musical staff with treble clef and key signature of one sharp. It features a melodic line with eighth notes and a bass line with chords. A slur labeled "1010" spans the first three measures. Circled numbers 2 and 6 are used as markers. Fingering numbers 3, 2, 4, 3, 1, 1, 4, 1, 1, 2, 3, 1 are present. The text "Nat. Harm. XII" is written below the staff.

Sixth musical staff with treble clef and key signature of one sharp. It features a melodic line with eighth notes and a bass line with chords. Slurs labeled "II", "2/3 II", and "1/2 II" are present. Fingering numbers 1, 3, 3, 0, 2, 2, 2 are present.

Seventh musical staff with treble clef and key signature of one sharp. It features a melodic line with eighth notes and a bass line with chords. Slurs labeled "I" and "II" are present. Circled numbers 3, 4, 4, 4, 4, 4, 1, 2 are used as markers. Fingering numbers 4, 4, 4, 2, 1, 3, 3, 1, 1, 4, 1, 4, 2 are present.

