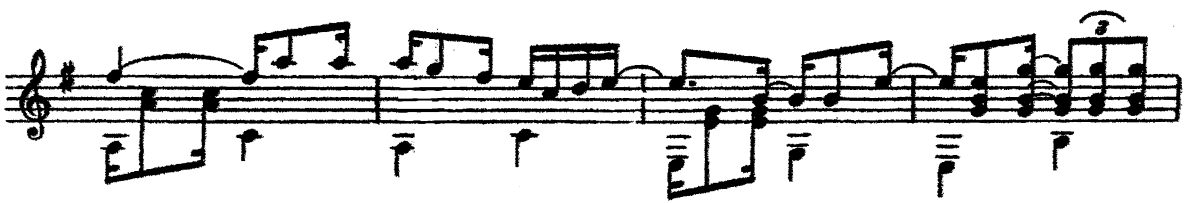
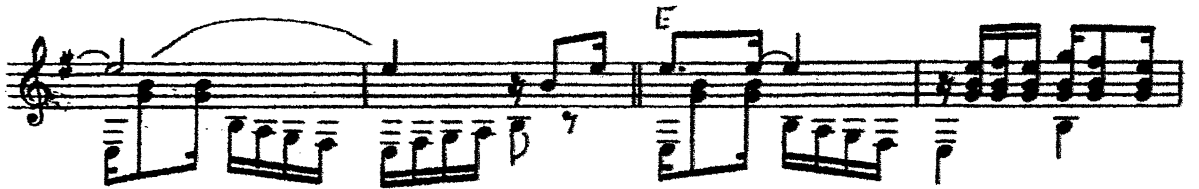
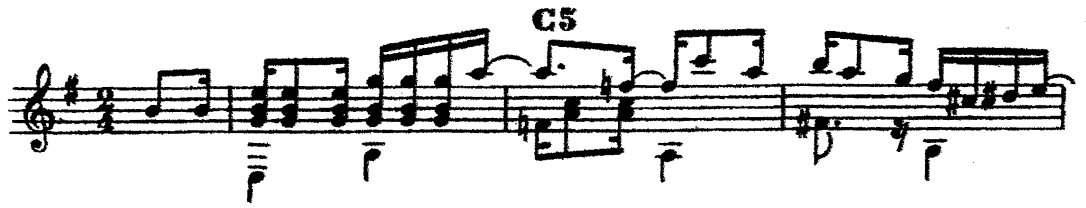


A VOLTA DO BOEMIO

SAMBA - CANÇÃO

Transcrição para VIOLÃO
de PEREIRA FILHO

ADELINO MOREIRA



First musical staff, treble clef, key signature of one sharp (F#). It features a melody with eighth and sixteenth notes, and a bass line with chords. A triplet of eighth notes is marked with a '3' above it.

Second musical staff, treble clef, key signature of one sharp. It features a melody with eighth and sixteenth notes, and a bass line with chords. A triplet of eighth notes is marked with a '3' above it. The label **C2** is positioned above the staff.

Third musical staff, treble clef, key signature of one sharp. It features a melody with eighth and sixteenth notes, and a bass line with chords. A triplet of eighth notes is marked with a '3' above it. The label **12** is positioned above the staff.

Fourth musical staff, treble clef, key signature of one sharp. It features a melody with eighth and sixteenth notes, and a bass line with chords. A triplet of eighth notes is marked with a '3' above it. The label **C2** is positioned above the staff.

Fifth musical staff, treble clef, key signature of one sharp. It features a melody with eighth and sixteenth notes, and a bass line with chords.

Sixth musical staff, treble clef, key signature of one sharp. It features a melody with eighth and sixteenth notes, and a bass line with chords. Two triplet markings with '3' above them are present. The label **Qa** is positioned above the staff.

Seventh musical staff, treble clef, key signature of one sharp. It features a melody with eighth and sixteenth notes, and a bass line with chords. Two triplet markings with '3' above them are present. The label **C5** is positioned above the staff.